

**EPSON OPOS ADK for .NET Manual**

# **Installation Guide**

## **Installer**

Version 1.12.22 Sep. 2015

**Notes**

- (1) Reproduction of any part of this documentation by any means is prohibited.
- (2) The contents of this documentation are subject to change without notice.
- (3) Comments and notification of any mistakes in this documentation are gratefully accepted.
- (4) This software cannot be used with other equipment that the specified.
- (5) EPSON will not be responsible for any consequences resulting from the use of any information in this documentation.

**Trademarks**

Microsoft®, Windows®, Windows Server® and Windows Vista® are trademarks or registered trademarks of Microsoft Corporation in the United States and/or other countries. IBM® and PC/AT® are trademarks or registered trademarks of International Business Machines Corporation in the United States, other countries, or both. Epson® and ESC/POS® are registered trademarks of Seiko Epson Corporation. Other product and company names used herein are for identification purposes only and may be trademarks or registered trademarks of their respective companies. Epson disclaims any and all rights in those marks.

The Bluetooth® word mark and logos are registered trademarks owned by Bluetooth SIG, Inc. and any use of such marks by SEIKO EPSON is under license. Other trademarks and trade names are those of their respective owners.

# Contents

---

<b>Chapter 1 Introduction .....</b>	<b>1</b>
<b>Chapter 2 Installation .....</b>	<b>3</b>
2.1 Starting the Installer .....	3
2.2 Selecting the Language.....	4
2.3 Introduction .....	5
2.4 License Agreement .....	6
2.5 Selecting the Type of Installation .....	7
2.6 Selecting Components to Install.....	8
2.7 Selecting Shortcut Folders .....	9
2.8 Selecting the Method of Connection .....	10
2.9 Checking the Settings .....	11
2.10 Completion .....	12
2.11 Restart.....	13
<b>Chapter 3 Changing Installed Items and Uninstalling .....</b>	<b>14</b>
3.1 Changing Installed Items and Starting Uninstall.....	14
3.2 Selecting Options .....	14
3.3 Selecting Components .....	16
<b>Chapter 4 Upgrading .....</b>	<b>17</b>
4.1 Starting the Upgrade .....	17
4.2 Upgrade Summary .....	18
4.3 Upgrade Progress .....	19
4.4 Finish Upgrading .....	19
<b>Chapter 5 Silent Installation/Uninstallation .....</b>	<b>21</b>
5.1 Silent Installation Process .....	21
5.2 Preparing Device Registration Information.....	21
5.3 Creating an Installation Script .....	22
5.4 Running Installation and Uninstallation .....	23
<b>Chapter 6 Forced Uninstall .....</b>	<b>24</b>
6.1 Using the Forced Uninstall option .....	24

# Chapter 1 Introduction

---

The following hardware and software configuration is required when installing EPSON OPOS ADK for .NET.

- Computer
  - IBM PC/AT compatible
    - Please follow the specifications recommended by your OS for system requirements (CPU, RAM, etc.).
    - A minimum of 10 MB of available hard disk space is required.
- Operating Systems:
  - Windows Embedded for Point Of Service
  - Windows XP Professional Service Pack 3 (32bit)
  - Windows Vista (Business, Enterprise, Ultimate) Service Pack 2
  - Windows Server 2008 Service Pack 2
  - Windows Server 2008 R2 Service Pack 1
  - Windows 7 (Professional/Enterprise/Ultimate) Service Pack 1
  - Windows Embedded Standard
  - Windows Embedded Standard 7
  - Windows Embedded POSReady 2009
  - Windows Embedded POSReady 7
  - Windows 8
  - Windows 8.1
  - Windows 10
  - Windows Server 2012
  - Windows Server 2012 R2
- .NET Framework
  - Microsoft .NET Framework 2.0
  - Microsoft .NET Framework 3.0
  - Microsoft .NET Framework 3.5
- POS for .NET
  - Microsoft POS for .NET 1.12
  - Before installing EPSON OPOS ADK for .NET on a system other than WEPOS or POSReady, it is necessary to install Microsoft POS for .NET

SDK.

## Chapter 2 Installation

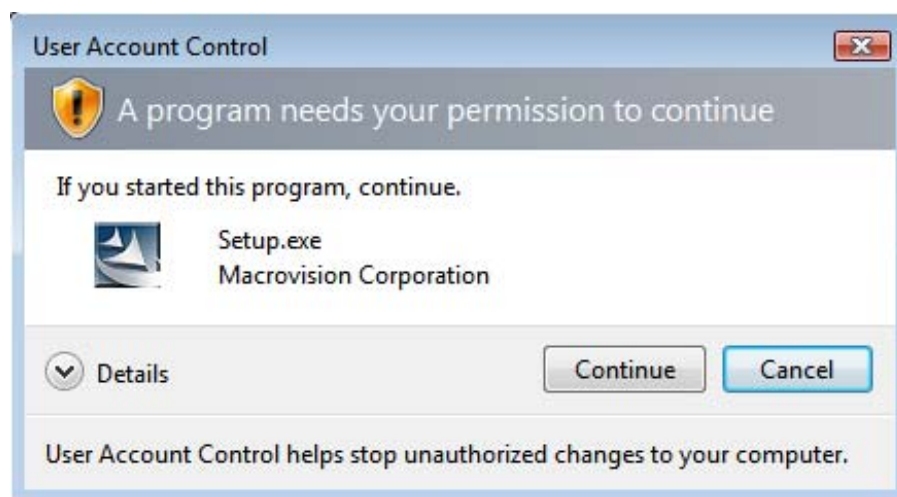
---

### 2.1 Starting the Installer

Run "setup.exe"

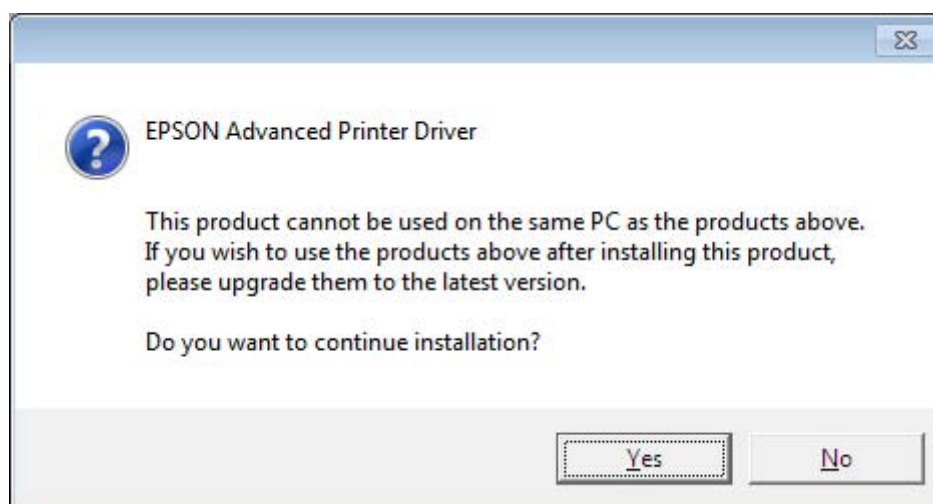
The screen for selecting the language appears\*. The installer must be run with Administrator privileges. If the installer is not run with Administrator privileges, then it will display an error message and exit.

\* For Windows Vista or later, the "User Account Control" message is displayed. Click "Continue" to proceed.



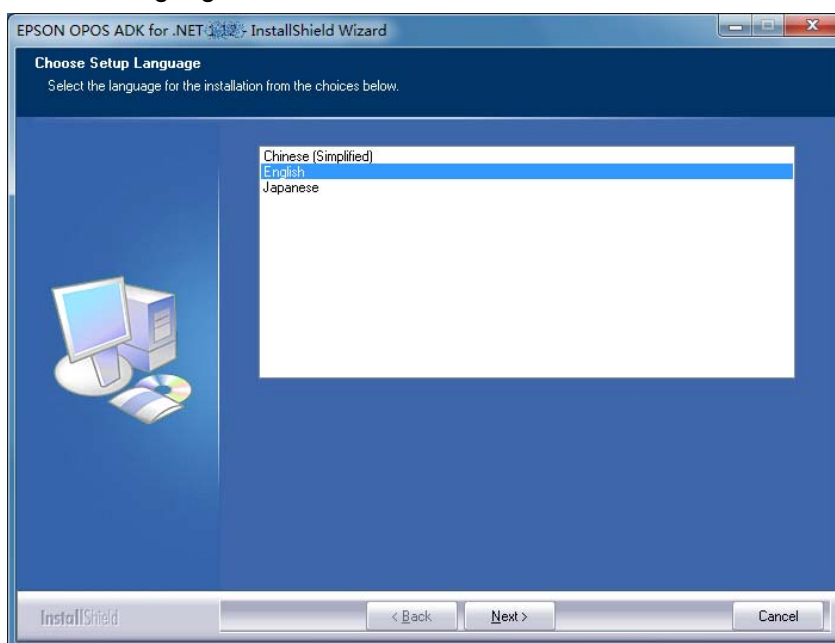
Note:

The following message will appear when an installed version of Epson software is incompatible with this version. Choose whether to continue the installation according to the message.



## 2.2 Selecting the Language

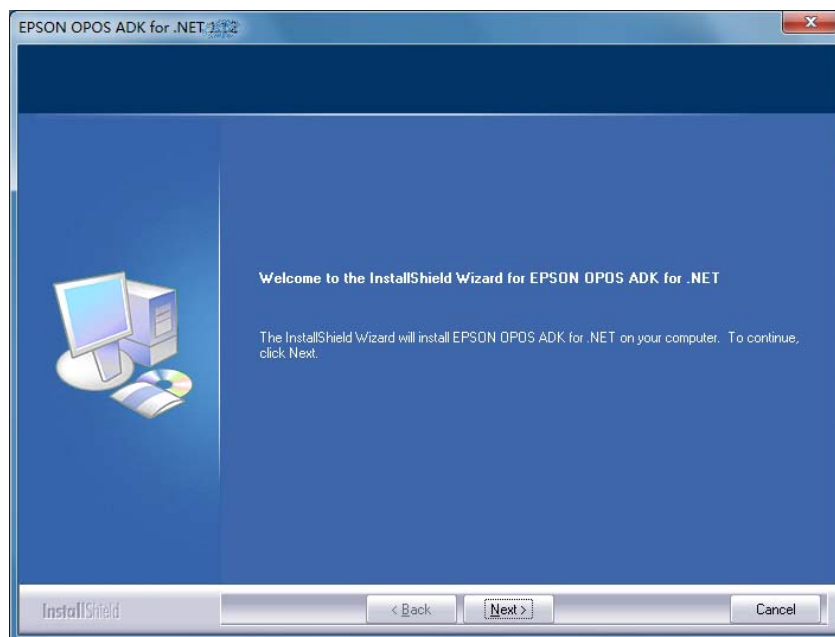
Select a language to use for the installation and click Next.



The welcome message appears.

## 2.3 Introduction

Click Next.

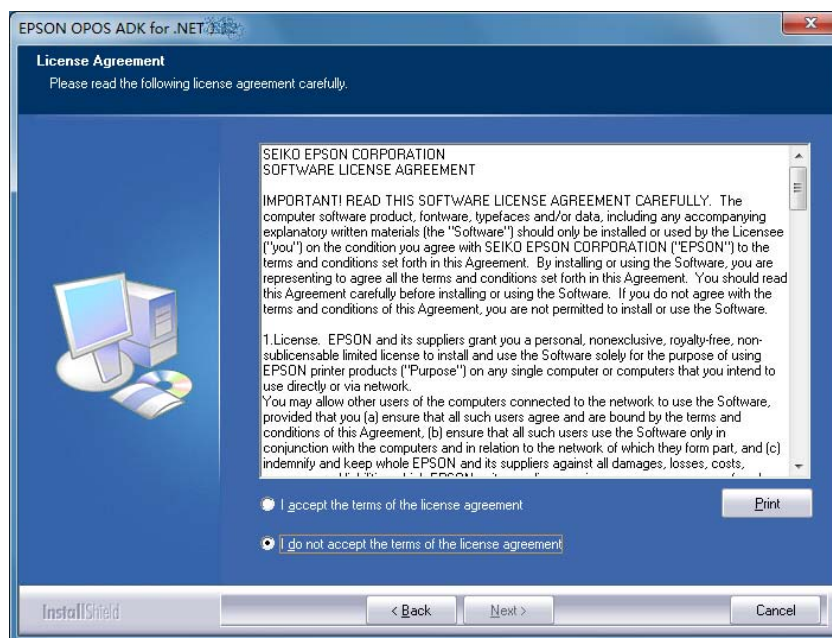


The license agreement screen appears.

## 2.4 License Agreement

After reading the entire agreement, select I accept the terms of the license agreement and then click Next.

If I accept the terms of the license agreement is not selected, Next is not enabled.

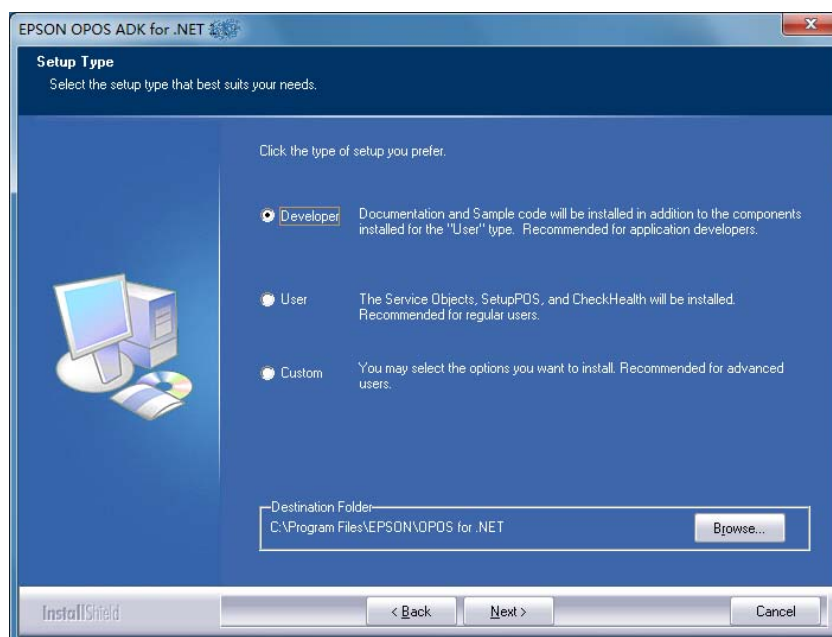


The screen for selecting the type of installation appears.

## 2.5 Selecting the Type of Installation

Select the type of installation to run and click Next.

- Selecting Developer installs the services, setup utility, documentation and samples.
- Selecting User installs the services and setup utility.
- Selecting Custom allows you to select installation options.



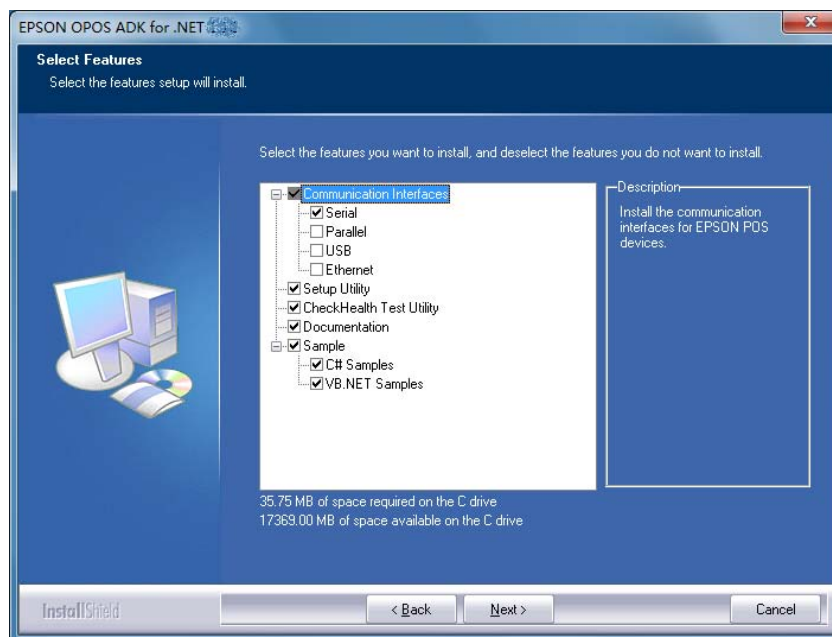
When Developer or User is selected, the screen for selecting the connection method appears. Go to [“2.8 Selecting the Connection Method.”](#)

When Custom is selected, the screen for selecting components to install appears. Go to [“2.6 Selecting Components to Install.”](#)

To change the installation folder, click Browse and select a folder. The default installation folder is “%Program Files%\EPSON\OPOS for .NET.”

## 2.6 Selecting Components to Install

Select the components to install and click Next.



The screen for selecting shortcut folders appears.

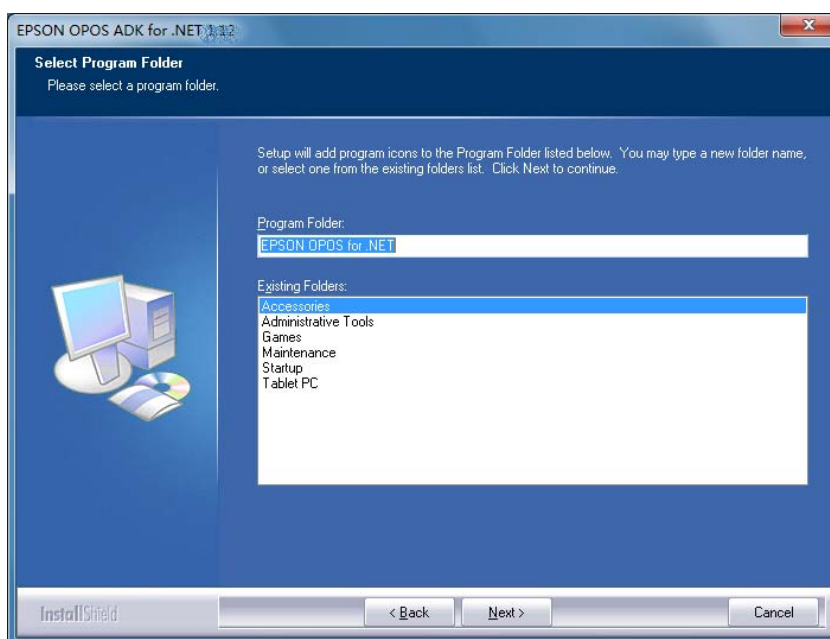
## 2.7 Selecting Shortcut Folders

Create a shortcut in "Start menu - Programs".

Select folders in which to create shortcuts and click Next.

The default folder is "EPSON OPOS for .NET".

Please note that unless a Program Folder is selected, the installation cannot continue.

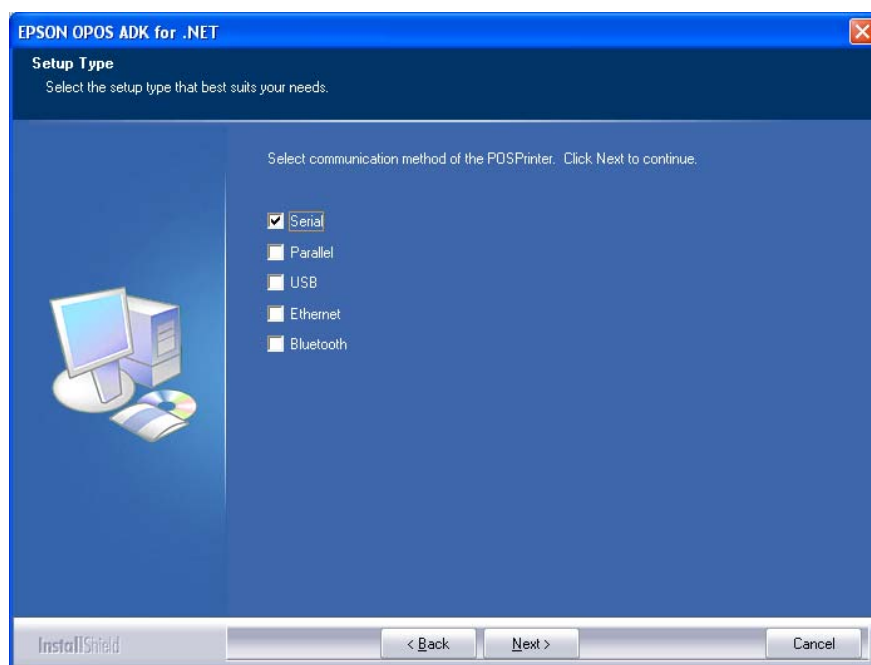


The screen for selecting the method of connection appears.

## 2.8 Selecting the Method of Connection

Select the method of connection used by POSPrinter (Serial, Parallel, USB, Ethernet or Bluetooth) and then click Next.

You can select multiple connection methods.

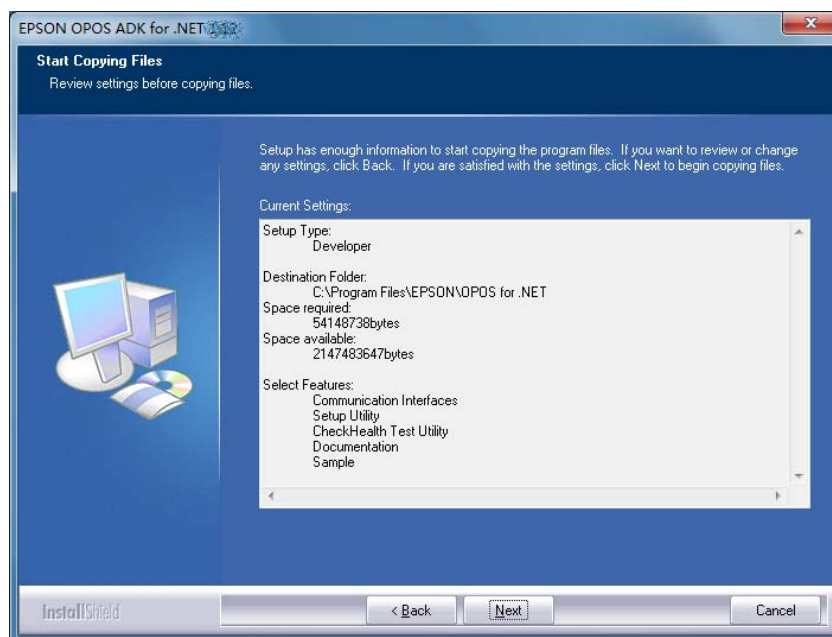


The screen for checking the settings appears.

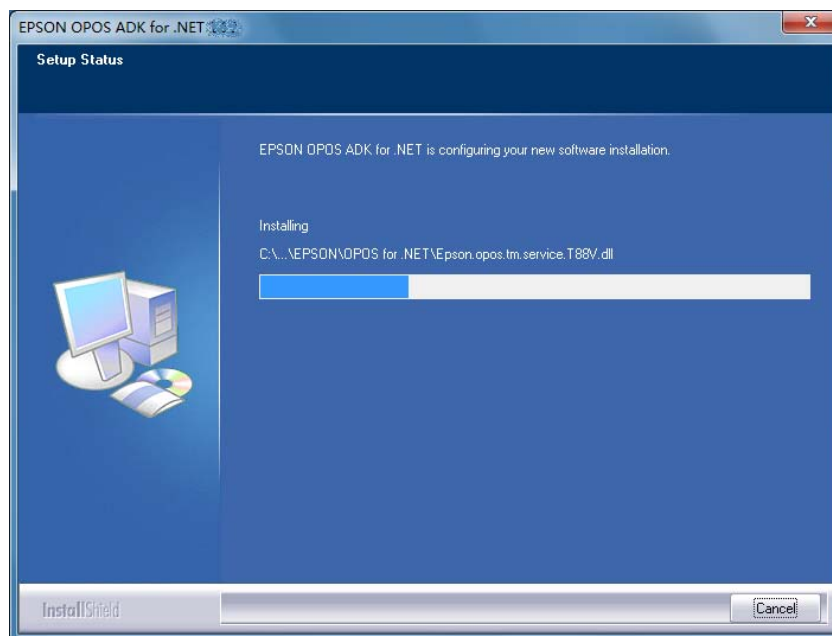
## 2.9 Checking the Settings

Check the settings.

If the settings are correct, click Install.



Installation starts, and progress is shown on the status bar.

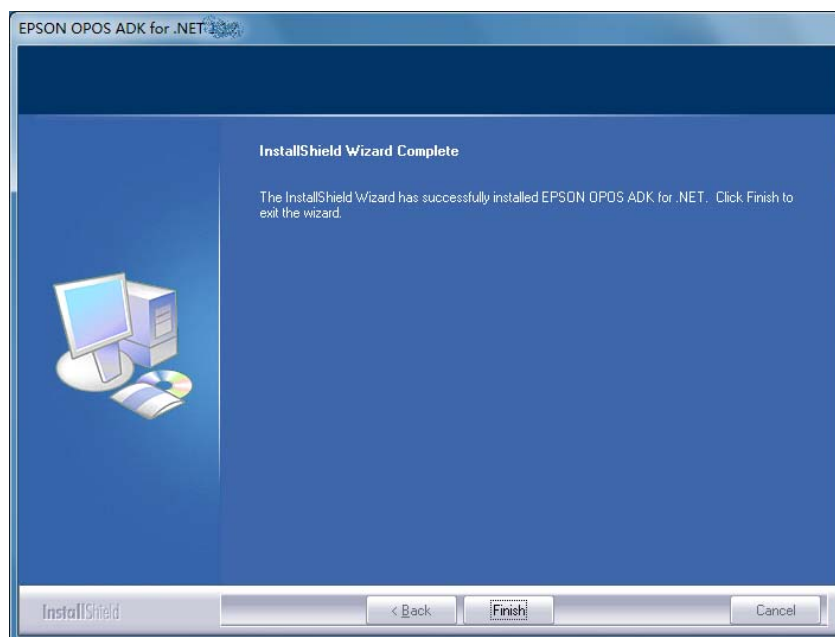


When the installation is complete, the completion screen appears.

## 2.10 Completion

This completes installation.

Click Finish to exit the installer.



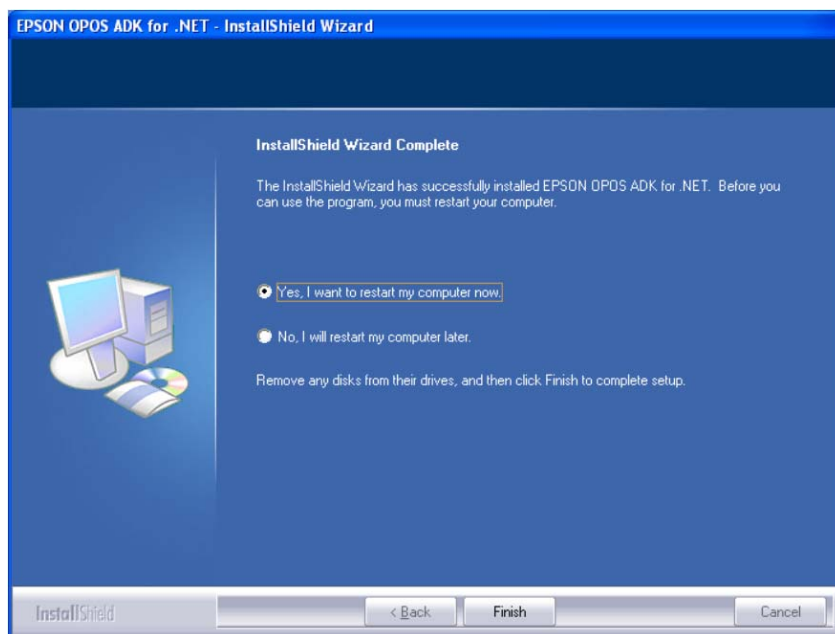
- You can use EPSON OPOS ADK for .NET immediately.

## 2.11 Restart

If system files are renewed because of the installation, rebooting of system may be requested.

Select “Yes, I want to restart my computer now” and then click Finish.

To restart the system later, select “No, I will restart my computer later” and click Finish.



- After restarting the system, you can use EPSON OPOS ADK for .NET.

## Chapter 3

# Changing Installed Items and Uninstalling

---

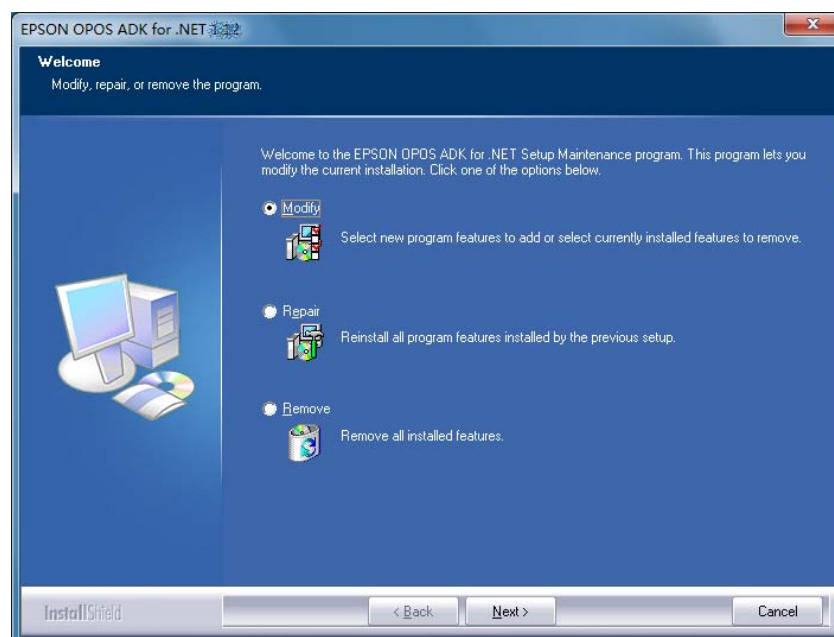
### 3.1 Changing Installed Items and Starting Uninstall

Double-click the Add or Remove Programs icon in Control Panel, and click Change or Remove for EPSON OPOS ADK for .NET.

Clicking Change displays the screen for selecting the options.

### 3.2 Selecting Options

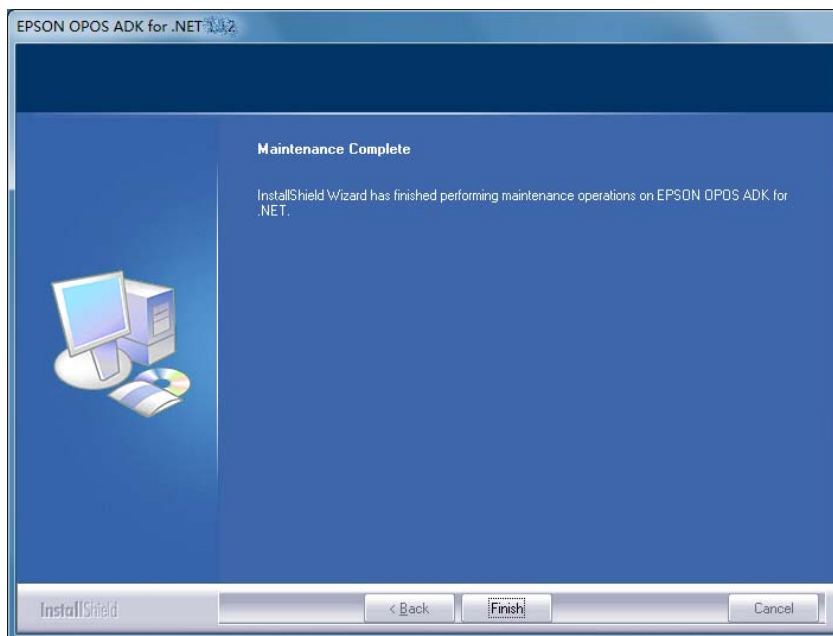
Select an option (Modify, Repair, or Remove) and then click Next.



- When Modify is selected, the screen for selecting components to add or remove appears. Go to ["3.3 Selecting Components."](#)

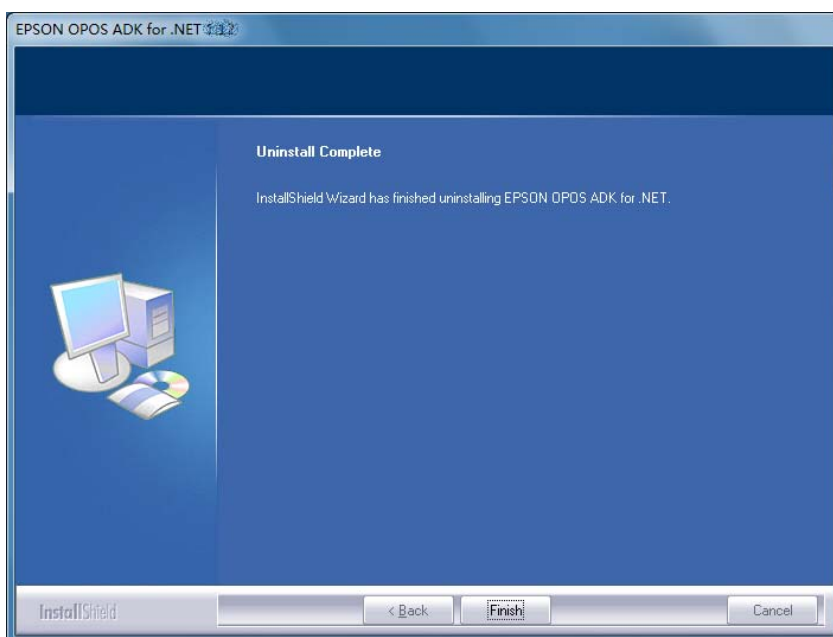
- Selecting Repair performs reinstallation with the same settings as previously.

When the installation is complete, the following screen appears. Click Finish to exit.



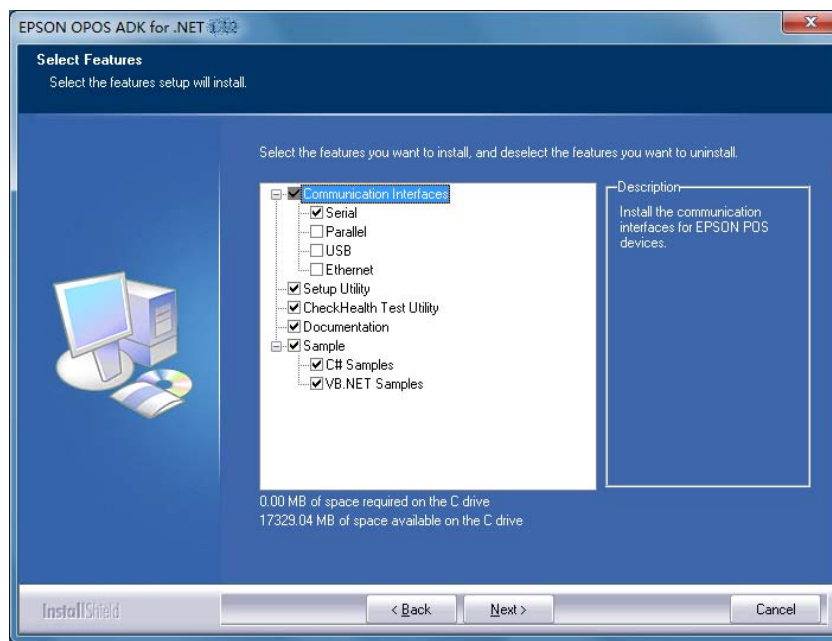
- Selecting Remove starts uninstallation.

When uninstallation is complete, the following screen appears. Click Finish to exit.



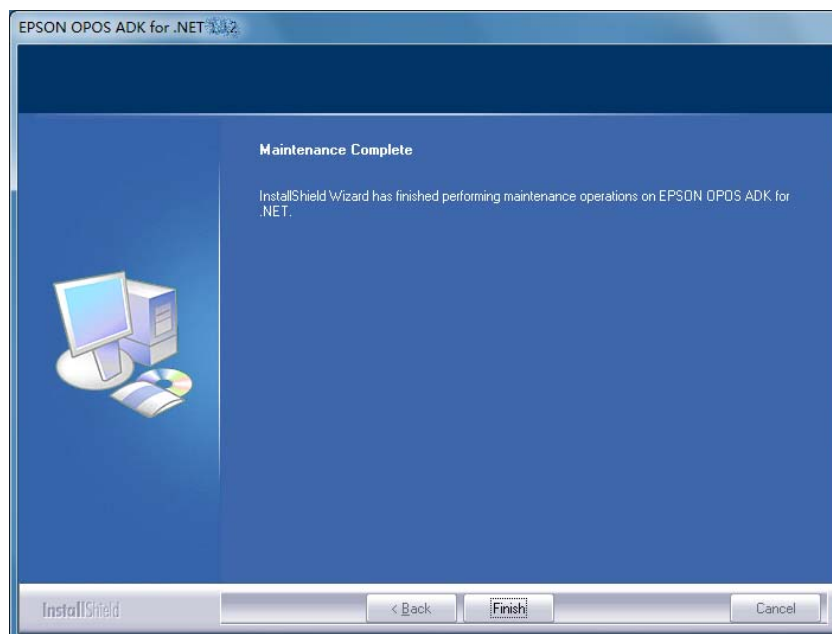
### 3.3 Selecting Components

Check components to add, and uncheck components to remove. After reviewing the components to add and remove, click Next.



The operation to modify the components starts.

When the operation is complete, the following screen appears. Click Finish to exit.

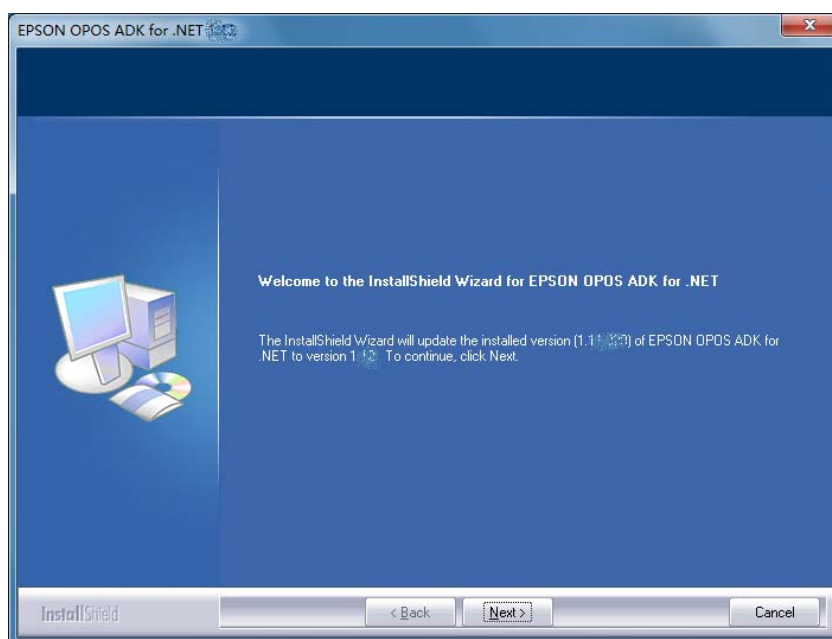


## Chapter 4 Upgrading

---

### 4.1 Starting the Upgrade

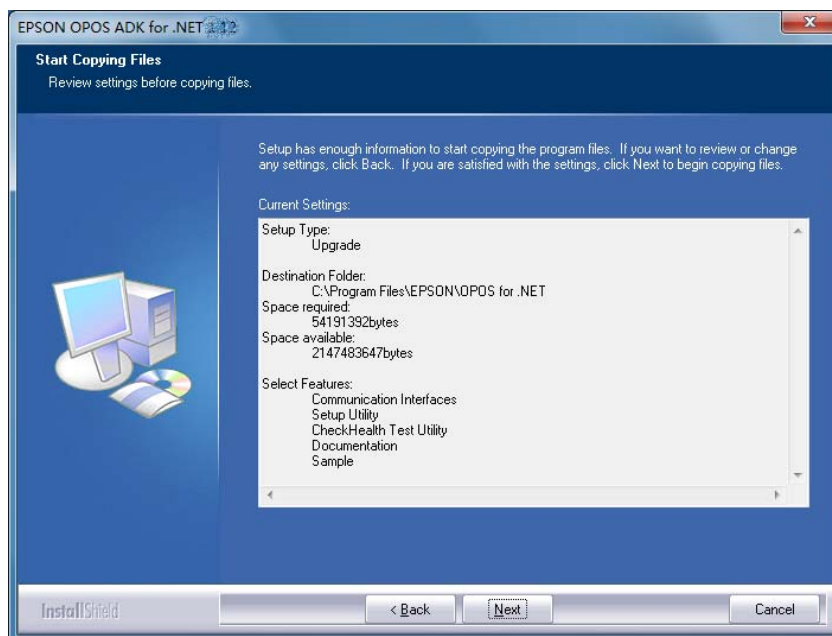
Upon the initialization of the installer, if a previous version of EPSON OPOS ADK for .NET has been detected, the installer will automatically assume Upgrade mode. The following screen appears, indicating the previous version to upgrade from and the version it is upgraded to; click Next to proceed, click Cancel to quit the installation.



Depending on the environment, the "Select Language" dialog box will be displayed. In this case, please select the language that you want.

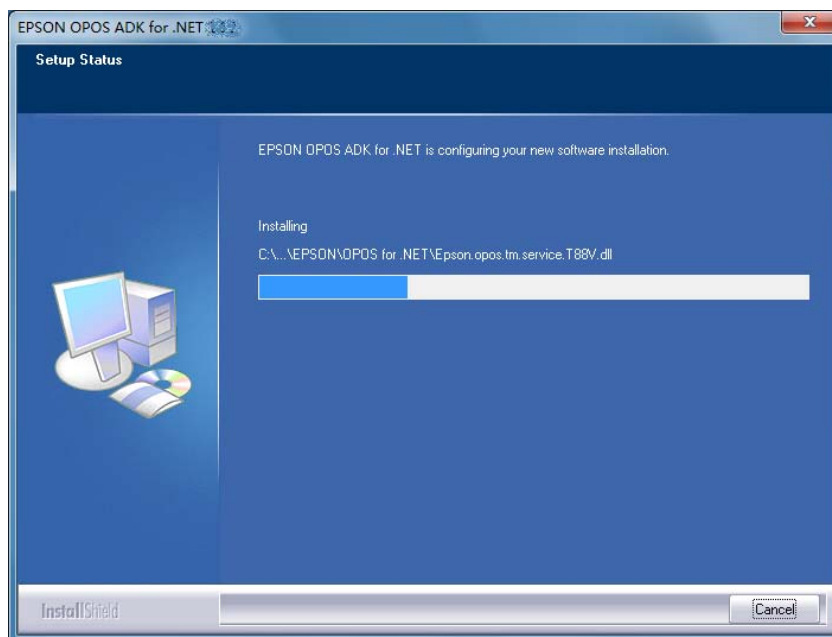
## 4.2 Upgrade Summary

A summary of components to be upgraded and the file size is shown in the following screen; click Next to proceed, click Back to return to the previous screen, click Cancel to quit the installation.



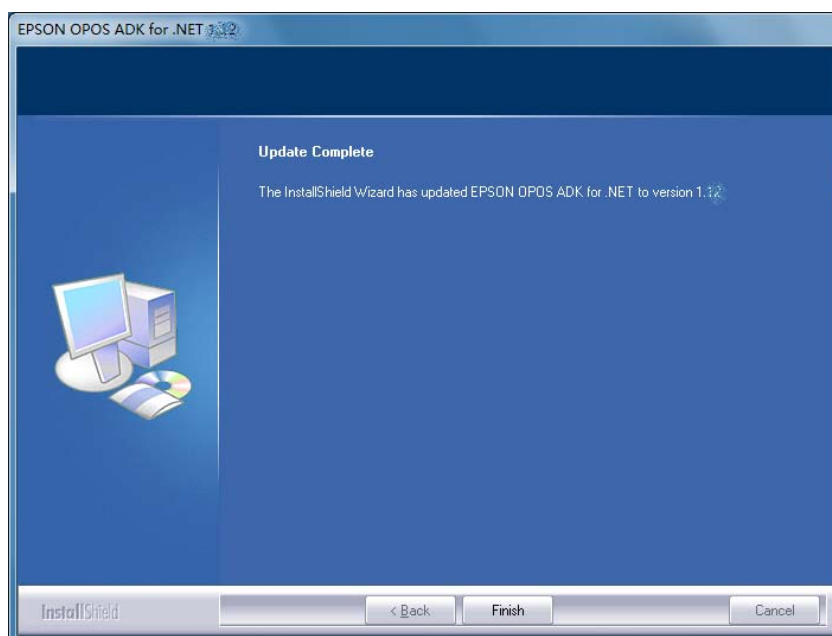
### 4.3 Upgrade Progress

Upgrade starts, and the progress is shown in the status bar.



### 4.4 Finish Upgrading

Upon upgrade completion, the following screen appears; click Finish to exit.



**Note:**

When installing this version on a system where EPSON OPOS ADK for .NET 1.11.20 or older is installed and the following devices are registered, be sure to

re-register the devices after installation is complete.

**POSPrinter:**

TM-H6000II, TM-H6000III, TM-T88III, TM-T88IV, TM-T70, TM-T90, TM-L90,  
TM-U220A, TM-U220B, TM-U220D

**LineDisplay:**

All Devices

**CashDrawer:**

All Devices

**MICR:**

All Devices

**Checkscanner:**

All Devices

**ElectronicJournal:**

All Devices

## Chapter 5 Silent Installation/Uninstallation

---

### 5.1 Silent Installation Process

Silent installation involves the following steps.

- Preparing Device Registration Information
- Creating an Installation Script
- Running Installation

### 5.2 Preparing Device Registration Information

Device registration information is required to perform a silent installation. Use the following procedure to collect the information.

- (1) Using SetupPOS, register the devices that will be used.
- (2) Use the information collection tool (CollectCopyInstallModules) to collect the device registration information. The tool is located in the installation destination folder.

**Example:**

**%Program Files%\EPSON\OPOS for .NET\CollectCopyInstallModules.bat**

When you run the tool, a folder named EpsonCopyInstallModules is created in the same directory as the tool. The following files used in silent installation are stored in the folder.

- Configuration.xml
- pcs.properties

Copy this file to the installation media.

## 5.3 Creating an Installation Script

Using the command prompt, append "/r" to "setup.exe" and run it.

**Example:**

**setup.exe /r**

When setup finishes, the file "setup.iss" is created in %WINDIR%.

When you run the information collection tool described in "5.2 Preparing Device Registration Information," the "setup.iss" file in %WINDIR% is stored in the EpsonCopyInstallModules folder. Copy this file to the installation media.

If you will use the information collection tool, do not change the filename. Doing so prevents the tool from collecting the right information.

The silent uninstallation script file is installed in the installation directory when EPSON OPOS ADK for .NET is installed. The file name is "Uninstall.iss." Copy this file to the installation media. The file name can be changed.

## 5.4 Running Installation and Uninstallation

Run "setup.exe" using the installation script (setup.iss) / uninstallation script (/uninstall.iss).

**Example:**

**setup.exe /s /f1"<absolute path>\<ISS file>"**

A log file is created in the same directory as the "/f1" option. The name of the log file is "setup.log."

To change the directory and file name of the log file, use the "/f2" option.

**Example:**

**setup.exe /s /f1"<absolute path 1>\<ISS file name>" /f2"<absolute path 2>\<log file name>"**

To run silent uninstallation, always specify the "/f2" option. If you do not use "/f2," the installation folder may not be deleted during uninstallation.

**Example:**

**"%ProgramFiles%\InstallShield Installation Information\{1CAEBFF7-6FA0-4C07-BEEB-014AF3CAC97E}\setup.exe" /s /f1"<installation directory>\Uninstall.iss" /f2"c:\setup.log"**

**Note:**

- Set the absolute path for the "f1" option.
- Only installation scripts that are created for the exact same configuration are supported. For example, installation scripts created for a clean install are not supported for upgrade, modify, etc. A new installation script must be created for each of these configurations.
- If system files are renewed because of the silent installation, the system may be rebooted.

## Chapter 6 Forced Uninstall

---

### 6.1 Using the Forced Uninstall option

In some cases it may not be possible to reinstall the OPOS.NET ADK. The Forced Uninstall option can be used to resolve this issue. To use this option, run the installer with the parameter “/z “uninstall””.

**Example:**

**setup.exe /z “uninstall”**

When this is complete, run the installer again without this parameter to reinstall OPOS.NET.

Force Uninstall option is not available on 64bit operating systems.